

COVID-19 GUIDANCE

CHILD CARE, PRE-SCHOOL, AND K-12 SCHOOLS

CHILD/STUDENT WITH NEW SYMPTOMS OF ILLNESS

Children/students with symptoms of illness should stay home and test for COVID-19.

- If test is negative, may return if at least 24 hours have passed since fever and symptoms have improved significantly.
- If test is positive, stay at home for 5 days. Isolation can end after Day 5 if symptoms are not present or are resolving and a diagnostic specimen collected on Day 5 or later tests negative. Consistent use of a well fitted face mask while indoors at child care/school is **strongly recommended** through **Day 10**. If unable to test or choosing not to test, and symptoms are not present or are resolving, isolation can end after Day 10.

CHILD/STUDENT EXPOSED TO PERSON WITH COVID-19 IN ANY SETTING

If potential exposure occurs at a school setting, parents/caregivers should be notified of the potential exposure.

Children/students with exposure to someone with COVID-19 may continue to take part in all aspects of child care or schooling, including sports and extracurricular activities, unless they develop symptoms or test positive for COVID-19. This includes children/students who have continuous household exposure (live with someone who has COVID-19). It is strongly recommended that exposed children/students wear a well-fitting mask indoors around others for at least 10 days following the date of last exposure, if not already doing so unless they are under age 2. It is recommended that the individual test for COVID-19 5 days after the exposure.

CHILDREN/STUDENTS WHO HAVE TESTED POSITIVE FOR COVID-19 IN THE PAST 90 DAYS

Asymptomatic children/students that have tested positive for COVID-19 within the past 90 days are not required to quarantine or test for COVID-19 in response to a new COVID-19 exposure. However, if a child develops new symptoms after being exposed to COVID-19, they should quarantine and test.

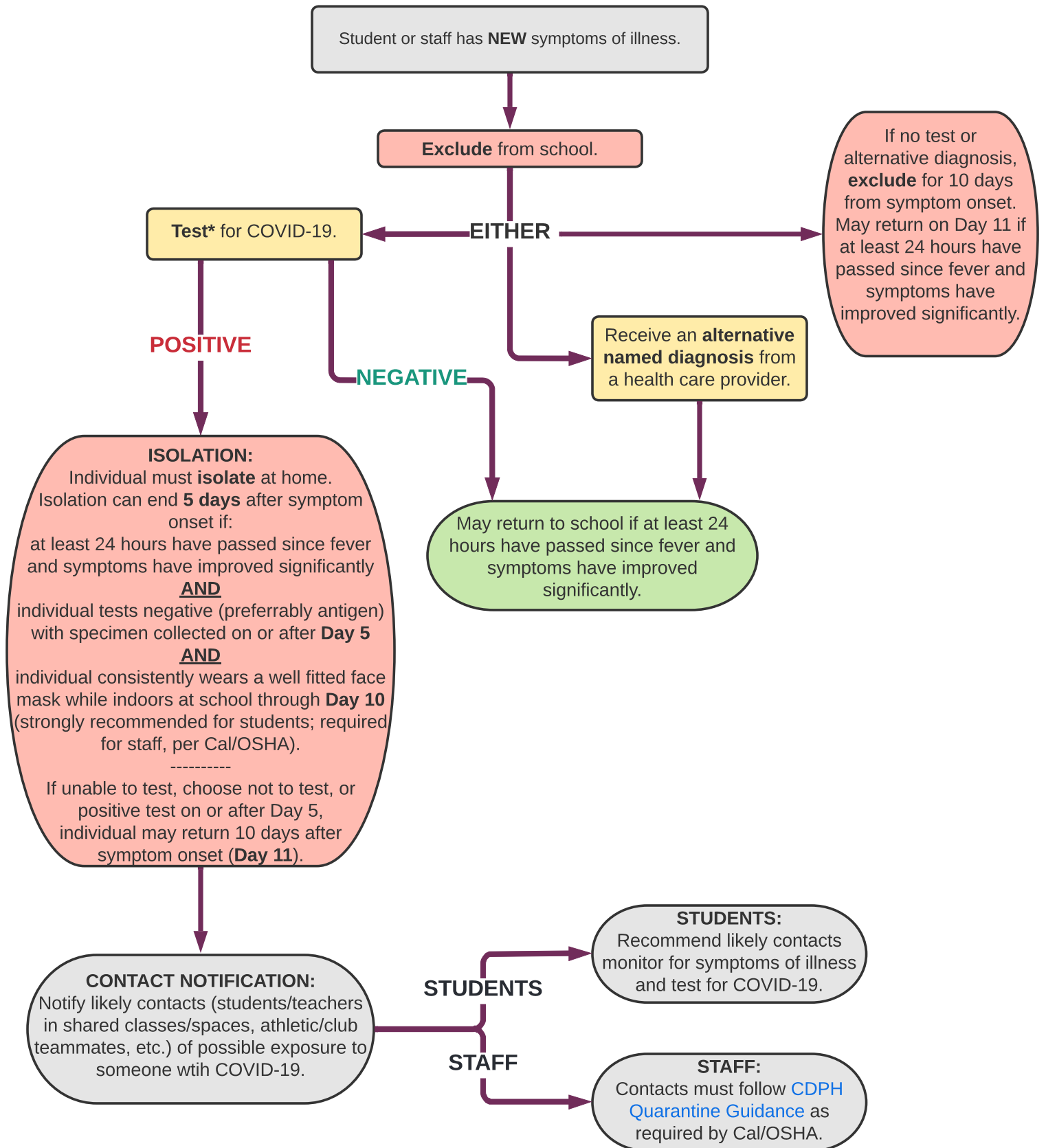
CLASSROOM EXPERIENCES 3 OR MORE CASES OF COVID-19 WITHIN A TWO WEEK PERIOD

If a classroom/team/group has three or more cases of COVID-19 within a two week period, please contact SCPH at SCPHschools@saccounty.net for further recommendations.

05/19/2022

*This guidance consolidates Child Care, Pre-School, & K-12 under uniform guidance.
It is unchanged from the April 6, 2022 K-12 Guidance.*

COVID-19 Decision Tree for Child Care, Pre-School, & K-12 Schools



* PCR or rapid antigen test are acceptable. Asymptomatic individuals who have tested positive for COVID-19 are not required to re-test for 90 days following their initial infection. However, if individuals develop new symptoms following a COVID-19 exposure, they should isolate and test.